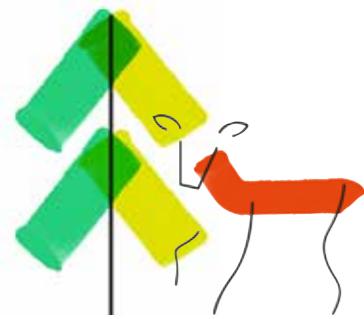


Marsh and Micklefield Big Local 2013 - 2020



Community Ranger



Youth Projects



Communication



Events



Education



Outreach



Business Support



Small Projects

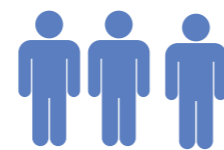


Covid

Volunteers



Residents steering the project



Residents leading cinema, proofreading and social media

Staff

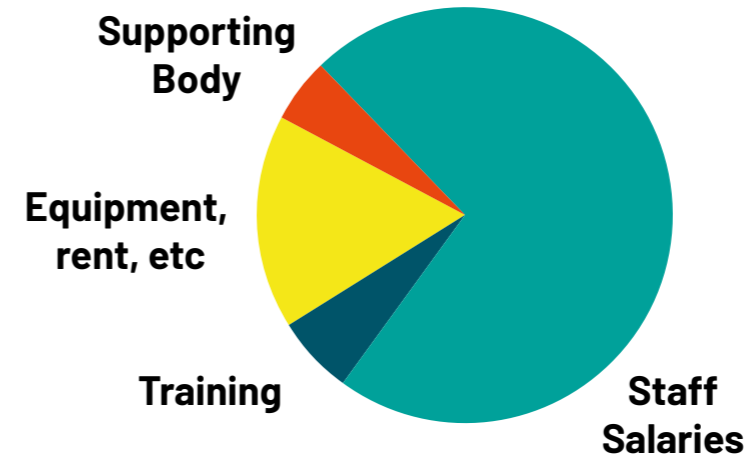
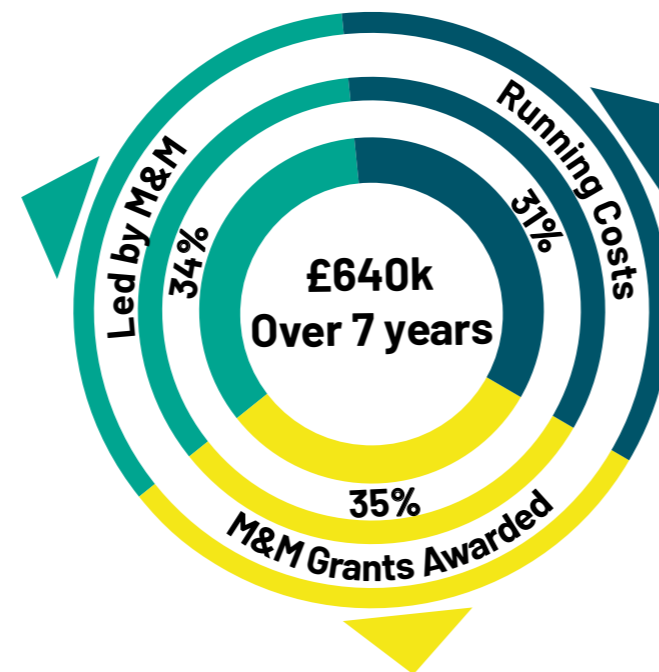


Graphic Design
Administration
Development

Supporting Body



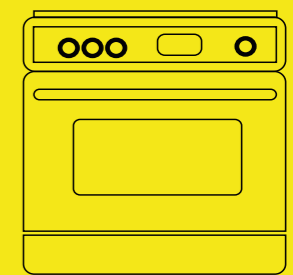
Account management
HR, advice:
Chiltern Rangers



Community Business

Hills Café

Awarded a £10k grant towards the £30k project to transform Keith Hills Butchers shop into a café, and a further £10k towards sustainable business development.



Community Buildings

Micklefield Community Centre
Awarded a grant for £2500 for general refurbishments and a further £2060 for a new cooker.

This is a summary of activity and expenditure so far.

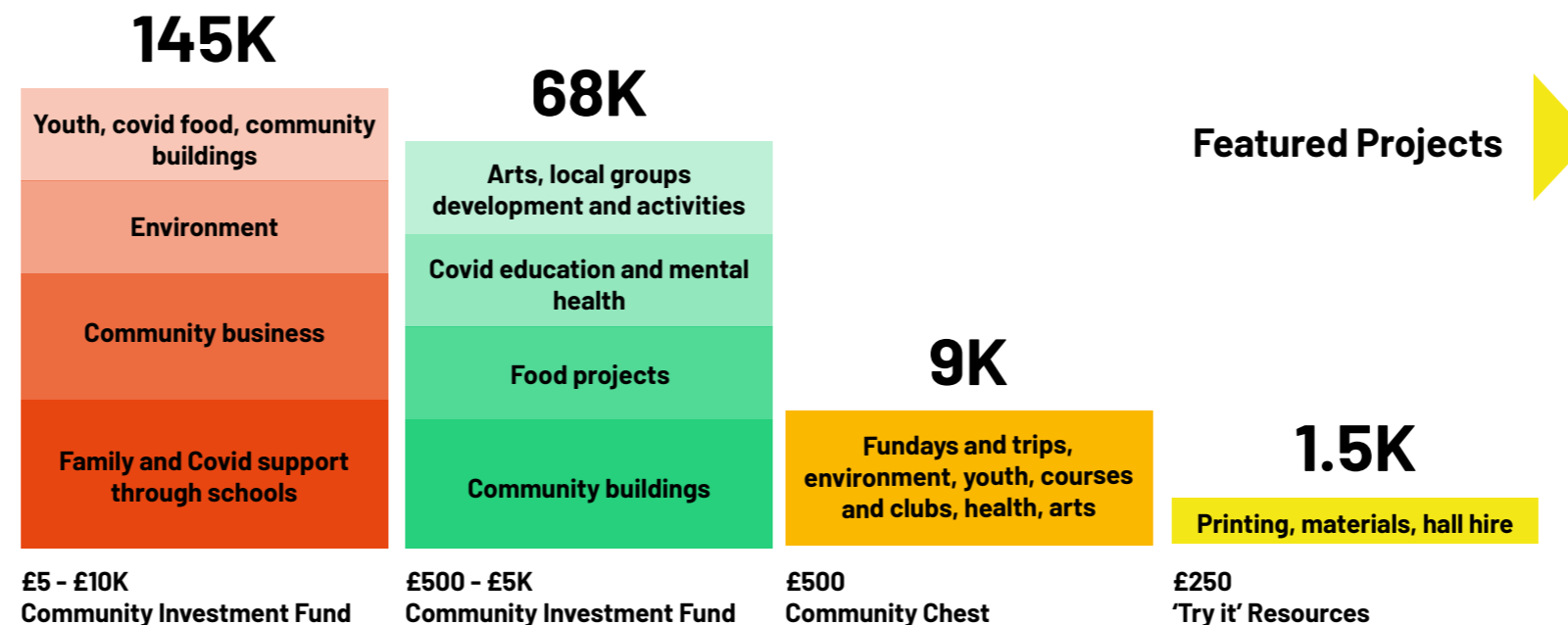
For more details visit:

Marshandmicklefield.com

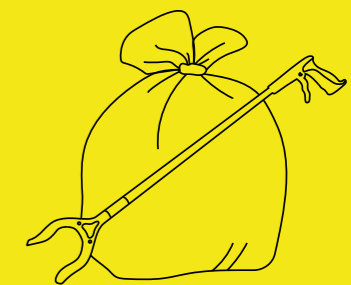
To find out about different ways to share your views go to the back page.

To go straight to an online ten question survey visit:

www.surveymonkey.co.uk/r/MarshandMicklefield_TenQuestions



Featured Projects



Environment

Wycombe Marsh Community Environmental Group
Awarded a grant of £10k over 5 years, to set up and run a voluntary group making environmental improvements, including litter picking and planting.

Share your view



Fill in our online survey (10 mins)
www.surveymonkey.co.uk/r/MarshandMicklefield_TenQuestions



Email Carol@marshandmicklefield.com for a paper copy and prepaid envelope



Call Lisa to share your thoughts over the phone
Lisa 07478687954

Need more info?



Visit marshandmicklefield.com or come to our online Q&A Tuesday 6th October 7PM
email Carol@marshandmicklefield.com for link



Give us a call
Lisa 07478687954



A note on Covid...

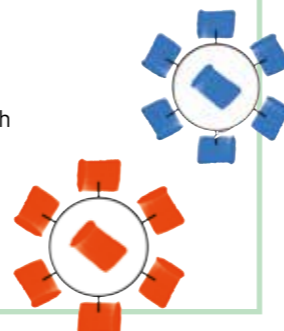
When Covid 19 struck we were faced with the challenge of how to use our funding and time as usefully as possible. Luckily our amazing community were quick to identify what was needed. Here are some of the things we have been able to support and do so far:

Funded by M+M

Wycombe Mind WRISE project for mental health and loneliness £500
Wycombe Sound to enable free advertising for local groups responding to Covid-19 £2245
Micklefield Community Tutoring for home schooling support £3070
Wycombe Marsh Community Environment Group for volunteer protective equipment £1348
Wycombe Wanderers: Keep Moving Forward, physical activity, connection and support for individuals during lockdown £4062
Marsh Infant School Dramatherapy programme delivering Covid-19 recovery support £8,000
Hills Café Covid-19 food response £10,000

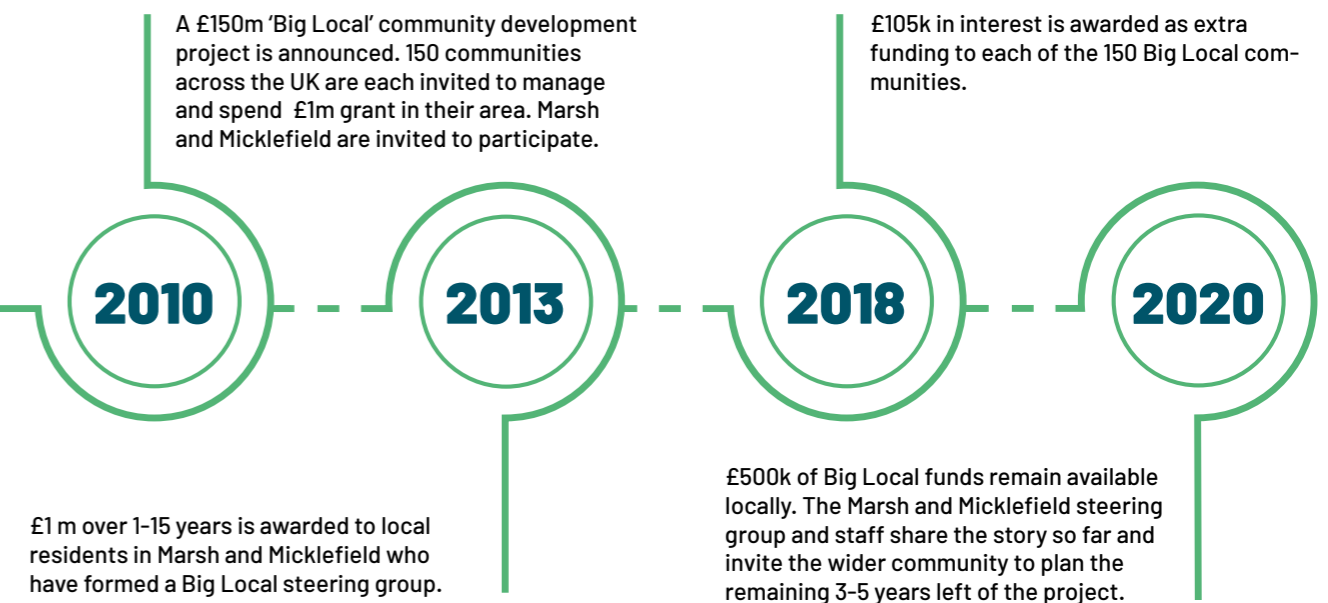
Led by M+M team

Created laptop loan scheme with 20 laptops for pupils at Ash Hill and Beechview schools - in partnership with local tech company Lycom.
Creative resources delivered to Marsh Infant School.
Mayfly converted to digital and produced every two weeks rather than 4 times a year.
Website transformed to host Covid support, home education and activity info during lockdown.
Covid-safe Movie Night!



An invitation to the people of Marsh and Micklefield

Share your views on the future of our area



Inside
Find out what happened so far



Back
Share your views